



MakeDoc

Oracle Service Bus - Demo project

MakeDoc

CUSTOMER'S ■
LOGO

Oracle Service Bus - Demo project

Contents

1. Introduction	4
2. Project documentation	5
2.1. CalculateBonita	5
2.1.1. Proxy services	5
2.1.1.1. JMS Proxy Services	5
2.1.1.1.1. CalculateBonita_JMS	5
2.1.1.2. Local Proxy Services	7
2.1.1.2.1. CalculateBonita_LP	7
2.1.1.3. Web Proxy Services	9
2.1.1.3.1. CalculateBonita_WS	9
2.1.2. Business services	11
2.1.2.1. bsCalculateBonita	11
2.1.3. XQueries	11
2.1.3.1. createGetObligatoryRequest	11
2.1.4. WSDL	12
2.1.4.1. CalculateBonita	12
2.1.5. XSD Schemas	12
2.1.5.1. CalcBonitaReq	12
2.2. GetObligator	12
2.2.1. Proxy services	13
2.2.1.1. Local Proxy Services	13
2.2.1.1.1. GetObligator_LP	13
2.2.1.2. Web Proxy Services	15
2.2.1.2.1. GetObligator_WS	15
2.2.2. Business services	17
2.2.2.1. CheckRegister	17
2.2.3. XQueries	17
2.2.3.1. CreateGetObligatorResponse	18
2.2.4. WSDL	18
2.2.4.1. CheckRegister	18
2.2.4.2. GetObligatorServiceConcreteWSDL	18
2.2.5. XSD Schemas	19
2.2.5.1. ObligatorsRegistrXSD	19
2.3. GetRefund	20
2.3.1. Proxy services	20
2.3.1.1. Local Proxy Services	20
2.3.1.1.1. GetRefund_JAVA	20
2.3.2. Archives	21
2.3.2.1. RefundProvider	21
3. Cross-reference documentation	23
3.1. Destinations	23
3.1.1. JMS	23
3.1.1.1. localhost:7777	23
3.1.1.1.1. cipesb.jms.etcomm.factoryxa/GetObligatoryTestQueue	23
3.1.1.1.1.1. References	23
3.1.2. SOAP	23
3.1.2.1. localhost:7777	23
3.1.2.1.1. CalculateBonita_WS	24

Oracle Service Bus - Demo project

3.1.2.1.1.1. References	24
3.1.2.1.2. CentralRegister/CheckRegister	24
3.1.2.1.2.1. References	24
3.1.2.1.3. GetObligator_WS	24
3.1.2.1.3.1. References	24
3.2. Projects	25
3.2.1. CalculateBonita	25
3.2.1.1. Business services	25
3.2.1.1.1. CalculateBonita/1.0/BussinesServices/bsCalculateBonita	25
3.2.1.1.1.1. Services	25
3.2.1.1.1.2. References	25
3.2.1.2. Proxy services	26
3.2.1.2.1. CalculateBonita/1.0/ProxyServices/CalculateBonita_JMS	26
3.2.1.2.1.1. Services	26
3.2.1.2.1.2. References	26
3.2.1.2.2. CalculateBonita/1.0/ProxyServices/CalculateBonita_LP	26
3.2.1.2.2.1. Services	27
3.2.1.2.3. CalculateBonita/1.0/ProxyServices/CalculateBonita_WS	27
3.2.1.2.3.1. Services	27
3.2.1.2.3.2. References	28
3.2.1.3. WSDL	28
3.2.1.3.1. CalculateBonita/1.0/WSDL/CalculateBonita	28
3.2.1.3.1.1. References	28
3.2.1.4. XQueries	28
3.2.1.4.1. CalculateBonita/1.0/XQuery/createGetObligatoryRequest	28
3.2.1.5. XSD Schemas	28
3.2.1.5.1. CalculateBonita/1.0/XSD/CalcBonitaReq	28
3.2.1.5.1.1. References	29
3.2.2. GetObligator	29
3.2.2.1. Business services	29
3.2.2.1.1. GetObligator/1.0/BussinesServices/CheckRegister	29
3.2.2.1.1.1. Services	29
3.2.2.1.1.2. References	29
3.2.2.2. Proxy services	29
3.2.2.2.1. GetObligator/1.0/ProxyServices/GetObligator_LP	30
3.2.2.2.1.1. Services	30
3.2.2.2.2. GetObligator/1.0/ProxyServices/GetObligator_WS	30
3.2.2.2.2.1. Services	30
3.2.2.2.2.2. References	30
3.2.2.3. WSDL	31
3.2.2.3.1. GetObligator/1.0/WSDL/CheckRegister	31
3.2.2.3.2. GetObligator/1.0/WSDL/GetObligatorServiceConcreteWSDL	31
3.2.2.3.2.1. References	31
3.2.2.4. XQueries	31
3.2.2.4.1. GetObligator/1.0/XQuery/CreateGetObligatorResponse	31
3.2.2.5. XSD Schemas	32
3.2.2.5.1. GetObligator/1.0/XSD/ObligatorsRegistrXSD	32
3.2.2.5.1.1. References	32
3.2.3. GetRefund	32
3.2.3.1. Archives	32
3.2.3.1.1. GetRefund/1.0/Jars/RefundProvider	32
3.2.3.2. Proxy services	32

Oracle Service Bus - Demo project

3.2.3.2.1. GetRefund/1.0/ProxyServices/GetRefund_JAVA	32
3.2.3.2.1.1. Services	33

Oracle Service Bus - Demo project

1. Introduction

This document contains structured documentation of OSB projects. It was generated automatically by MakeDoc for Oracle. The document has two parts, project documentation and cross-reference documentation.

Project documentation provides detailed description for each documented project. Besides, it contains also automatically generated diagrams for following resources: proxy services, business services, WSDLs, XSDs, XQueries and XSLTs.

Oracle Service Bus - Demo project

2. Project documentation

Chapter contains list of documented OSB projects.

2.1. CalculateBonita

Chapter contains list of OSB object types available in the project CalculateBonita.

2.1.1. Proxy services

Chapter contains description of Proxy services from project CalculateBonita.

2.1.1.1. JMS Proxy Services

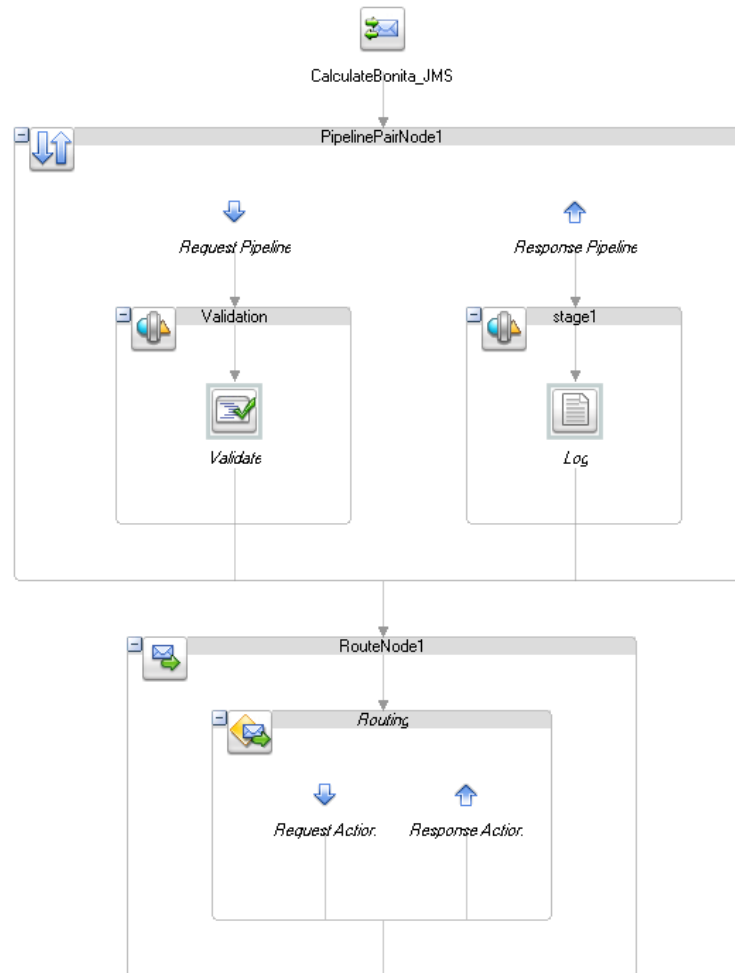
Chapter contains description of JMS Proxy Services from project CalculateBonita.

2.1.1.1.1. CalculateBonita_JMS

Section contains description of Proxy Service CalculateBonita/1.0/ProxyServices/CalculateBonita_JMS

Oracle Service Bus - Demo project

Message Flow



General Configuration

- **Service Type:** Messaging Service
- **Proxy Service Provider:**

Message Type Configuration

- **Request Message Type:** XML (Schema: [CalcBonitaReq](#) on page 12 , element="CalcBonitaRequest")
- **Response Message Type:** XML

Transport Configuration

- **Protocol:** jms
- **Endpoint URI:** jms://localhost:7777/cipesb.jms.etcomm.factoryxa/GetObligatoryTestQueue
- **Get All Headers:** No

Oracle Service Bus - Demo project

JMS Transport Configuration

- **Destination Type:** Queue
- **Use SSL:** DISABLED
- **Is Response Required:** DISABLED
- **Message Selector:**
- **Request Encoding:** UTF-8
- **Dispatch Policy:**

Message Level Security Configuration

- **Custom Authentication:**

2.1.1.2. Local Proxy Services

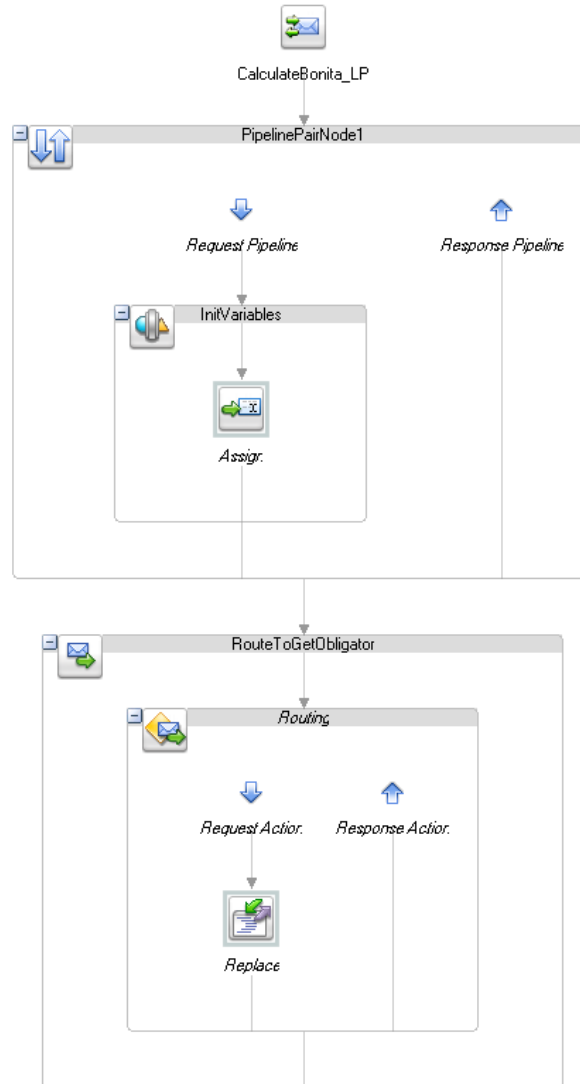
Chapter contains description of Local Proxy Services from project CalculateBonita.

2.1.1.2.1. CalculateBonita_LP

Section contains description of Proxy Service CalculateBonita/1.0/ProxyServices/CalculateBonita_LP

Oracle Service Bus - Demo project

Message Flow



General Configuration

- **Service Type:** XML Service
- **Proxy Service Provider:**

Message Type Configuration

- **Request Message Type:**
- **Response Message Type:**

Transport Configuration

- **Protocol:** local

Oracle Service Bus - Demo project

- **Get All Headers:** Yes
Message Level Security Configuration
- **Custom Authentication:**

2.1.1.3. Web Proxy Services

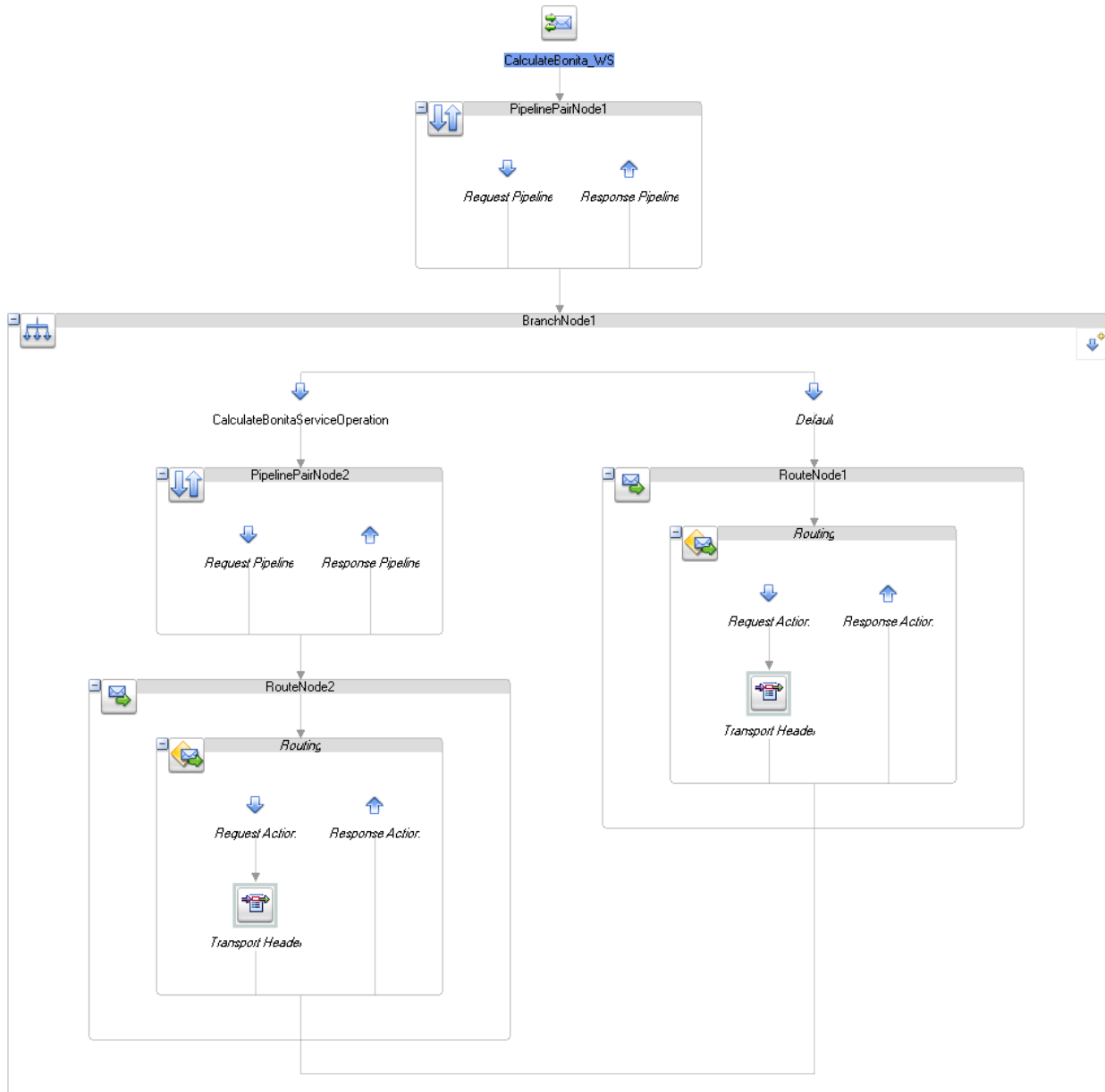
Chapter contains description of Web Proxy Services from project CalculateBonita.

2.1.1.3.1. CalculateBonita_WS

Section contains description of Proxy Service CalculateBonita/1.0/ProxyServices/CalculateBonita_WS

Oracle Service Bus - Demo project

Message Flow



General Configuration

- **Service Type:** Web Service - SOAP 1.1 (WSDL: [CalculateBonita](#) on page 12)
- **Proxy Service Provider:**

Transport Configuration

- **Protocol:** http

Oracle Service Bus - Demo project

- **Endpoint URI:** /CalculateBonita_WS
- **Get All Headers:** Yes

HTTP Transport Configuration

- **Authentication:**
- **Dispatch Policy:**

Message Level Security Configuration

- **Custom Authentication:**

Operation Selection Configuration

- **EnforceWS-I Compliance:** No
- **Selection Algorithm:** SOAP Body Type

2.1.2. Business services

Chapter contains description of Business services from project CalculateBonita.

2.1.2.1. bsCalculateBonita

Chapter contains description of Business Service CalculateBonita/1.0/BussinesServices/bsCalculateBonita.

General Configuration

- **Service Name:** bsCalculateBonita
- **Description:** *No description specified*
- **Service Type:** SOAP

Transport Configuration

- **Retry Count:** 0
- **Retry Interval:** 120
- **Endpoint URI:** http://localhost:7777/GetObligator_WS
- **Protocol:** http
- **Load Balancing Algorithm:** random

HTTP Transport Configuration

- **Service Account:**
- **Timeout:** 0
- **Follow HTTP redirects:** ENABLED
- **Authentication:**
- **HTTP Request Method:** POST

SOAP Binding Configuration

- **Enforce WS-I Compliance:** No

2.1.3. XQueries

Chapter contains description of XQueries from project CalculateBonita.

2.1.3.1. createGetObligatoryRequest createGetObligatoryRequest.Xquery

Section contains description of XQuery "createGetObligatoryRequest.Xquery"

Oracle Service Bus - Demo project

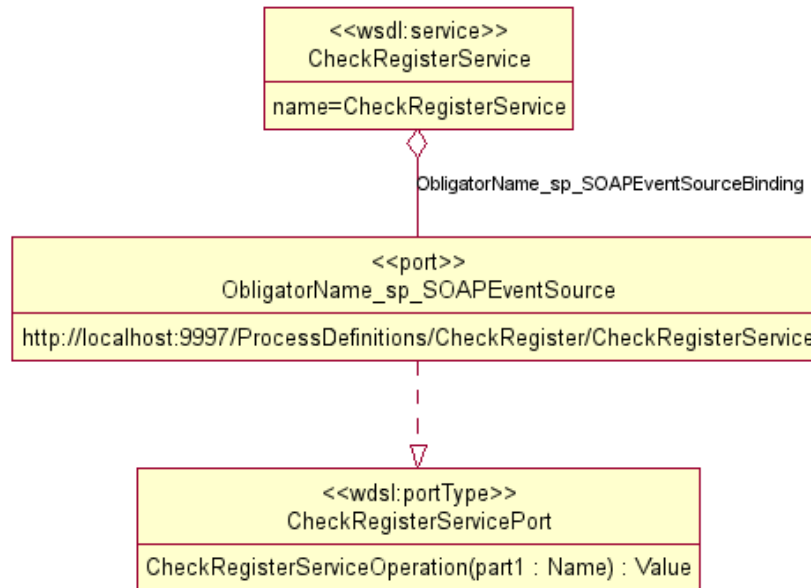
2.1.4. WSDL

Chapter contains description of WSDL from project CalculateBonita.

2.1.4.1. CalculateBonita

Section contains diagram of webService and its source file.

WSDL Diagram



Source

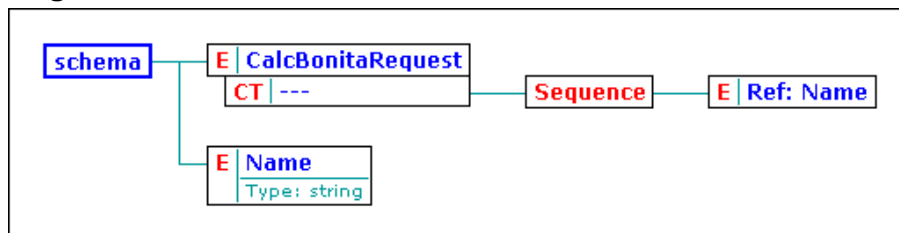
2.1.5. XSD Schemas

Chapter contains description of XSD Schemas from project CalculateBonita.

2.1.5.1. CalcBonitaReq

Section contains diagram of XMLSchema and its source file.

XSD Diagram



Source

2.2. GetObligator

Oracle Service Bus - Demo project

Chapter contains list of OSB object types available in the project GetObligator.

2.2.1. Proxy services

Chapter contains description of Proxy services from project GetObligator.

2.2.1.1. Local Proxy Services

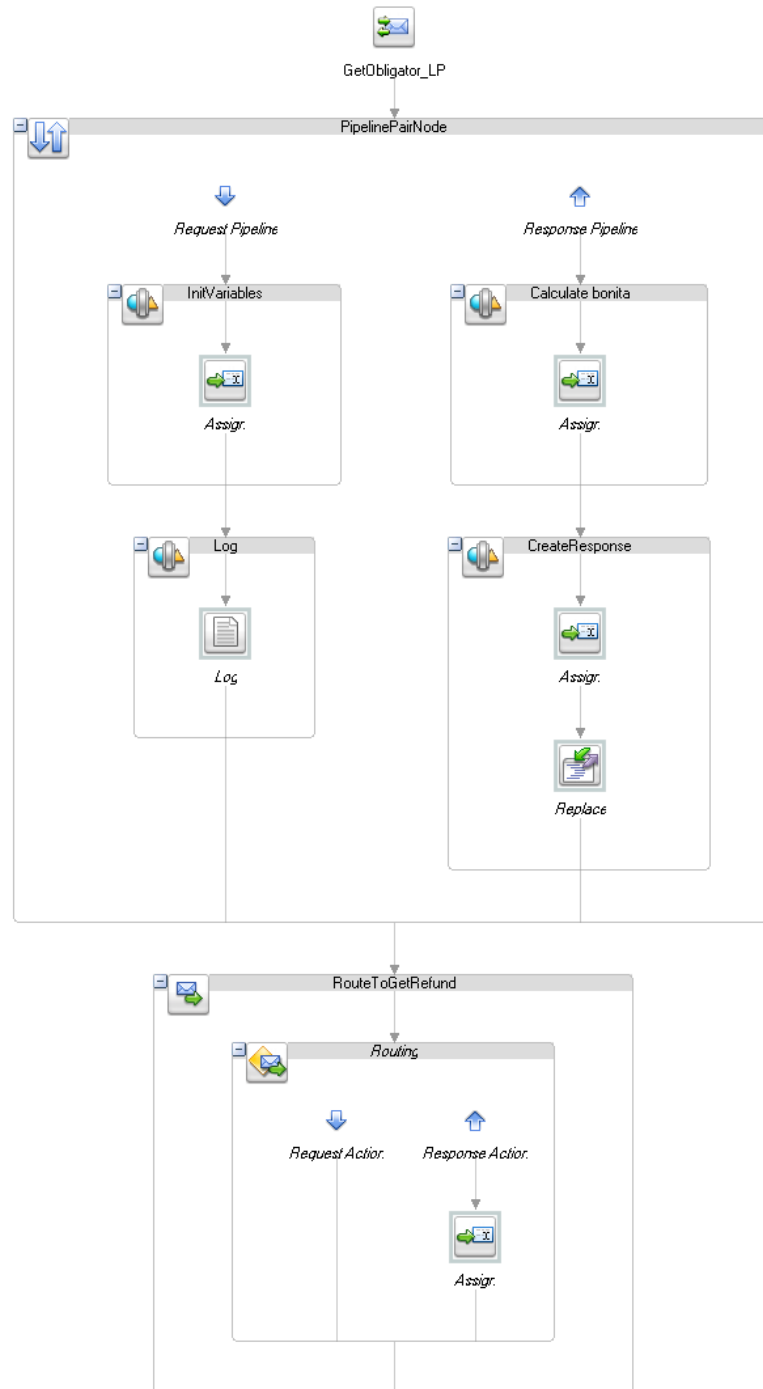
Chapter contains description of Local Proxy Services from project GetObligator.

2.2.1.1.1. GetObligator_LP

Section contains description of Proxy Service GetObligator/1.0/ProxyServices/GetObligator_LP

Oracle Service Bus - Demo project

Message Flow



Oracle Service Bus - Demo project

General Configuration

- **Service Type:** XML Service
- **Proxy Service Provider:**

Message Type Configuration

- **Request Message Type:**
- **Response Message Type:**

Transport Configuration

- **Protocol:** local
- **Get All Headers:** Yes

Message Level Security Configuration

- **Custom Authentication:**

2.2.1.2. Web Proxy Services

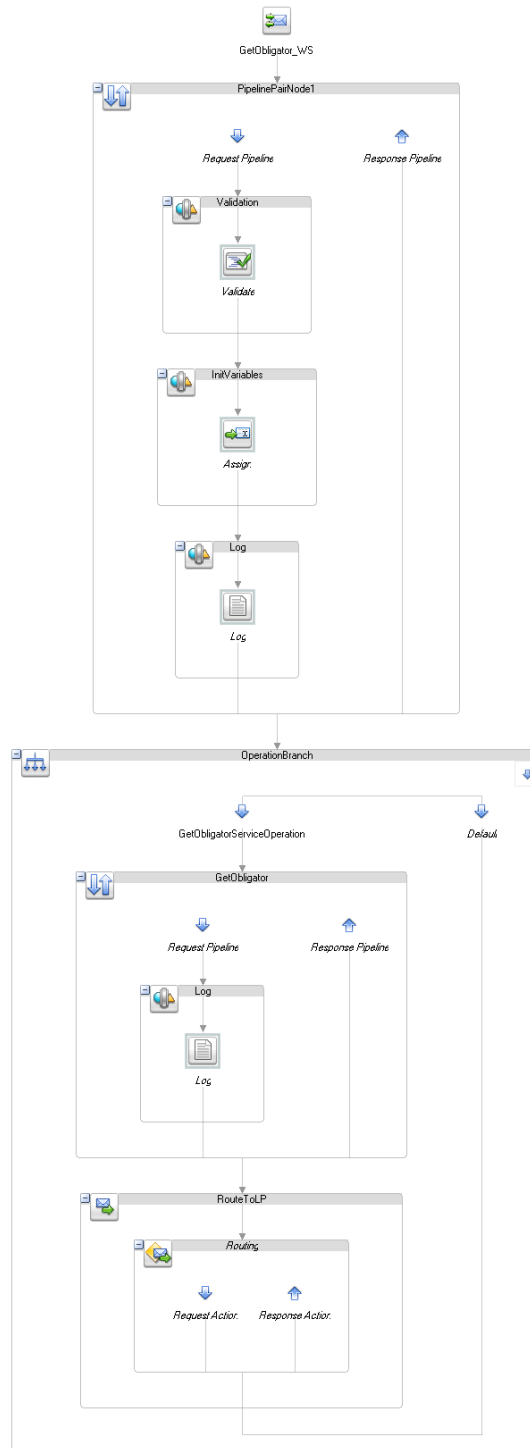
Chapter contains description of Web Proxy Services from project GetObligator.

2.2.1.2.1. GetObligator_WS

Section contains description of Proxy Service GetObligator/1.0/ProxyServices/GetObligator_WS

Oracle Service Bus - Demo project

Message Flow



Oracle Service Bus - Demo project

General Configuration

- **Service Type:** Web Service - SOAP 1.1 (WSDL: [GetObligatorServiceConcreteWSDL](#) on page 18)
- **Proxy Service Provider:**

Transport Configuration

- **Protocol:** http
- **Endpoint URI:** /GetObligator_WS
- **Get All Headers:** Yes

HTTP Transport Configuration

- **Authentication:**
- **Dispatch Policy:**

Message Level Security Configuration

- **Custom Authentication:**

Operation Selection Configuration

- **EnforceWS-I Compliance:** No
- **Selection Algorithm:** SOAP Body Type

2.2.2. Business services

Chapter contains description of Business services from project GetObligator.

2.2.2.1. CheckRegister

Chapter contains description of Business Service GetObligator/1.0/BussinesServices/CheckRegister.

General Configuration

- **Service Name:** CheckRegister
- **Description:** *No description specified*
- **Service Type:** SOAP

Transport Configuration

- **Retry Count:** 0
- **Retry Interval:** 30
- **Endpoint URI:** http://localhost:7777/CentralRegister/CheckRegister
- **Protocol:** http
- **Load Balancing Algorithm:** round-robin

HTTP Transport Configuration

- **Service Account:**
- **Timeout:** 0
- **Follow HTTP redirects:** ENABLED
- **Authentication:**
- **HTTP Request Method:** POST

SOAP Binding Configuration

- **Enforce WS-I Compliance:** No

2.2.3. XQueries

Chapter contains description of XQueries from project GetObligator.

Oracle Service Bus - Demo project

2.2.3.1. CreateGetObligatorResponse

CreateGetObligatorResponse.Xquery

Section contains description of XQuery "CreateGetObligatorResponse.Xquery"

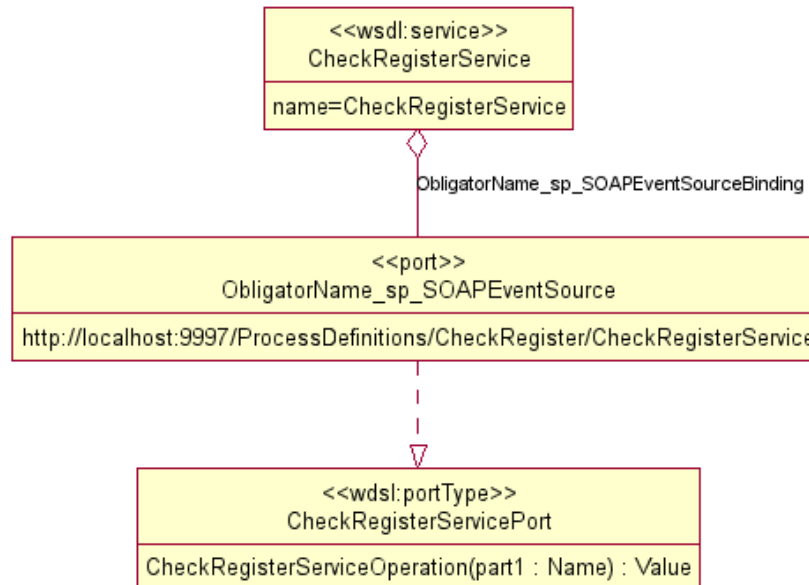
2.2.4. WSDL

Chapter contains description of WSDL from project GetObligator.

2.2.4.1. CheckRegister

Section contains diagram of webService and its source file.

WSDL Diagram



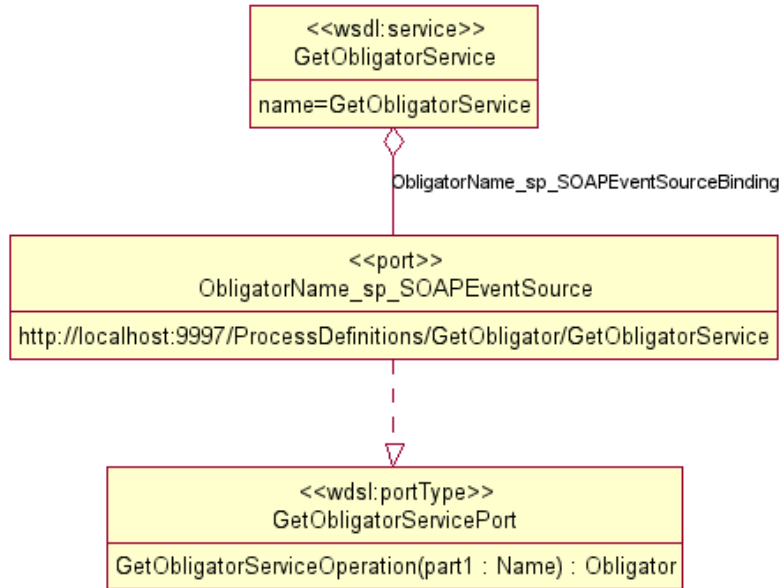
Source

2.2.4.2. GetObligatorServiceConcreteWSDL

Section contains diagram of webService and its source file.

Oracle Service Bus - Demo project

WSDL Diagram



Source

2.2.5. XSD Schemas

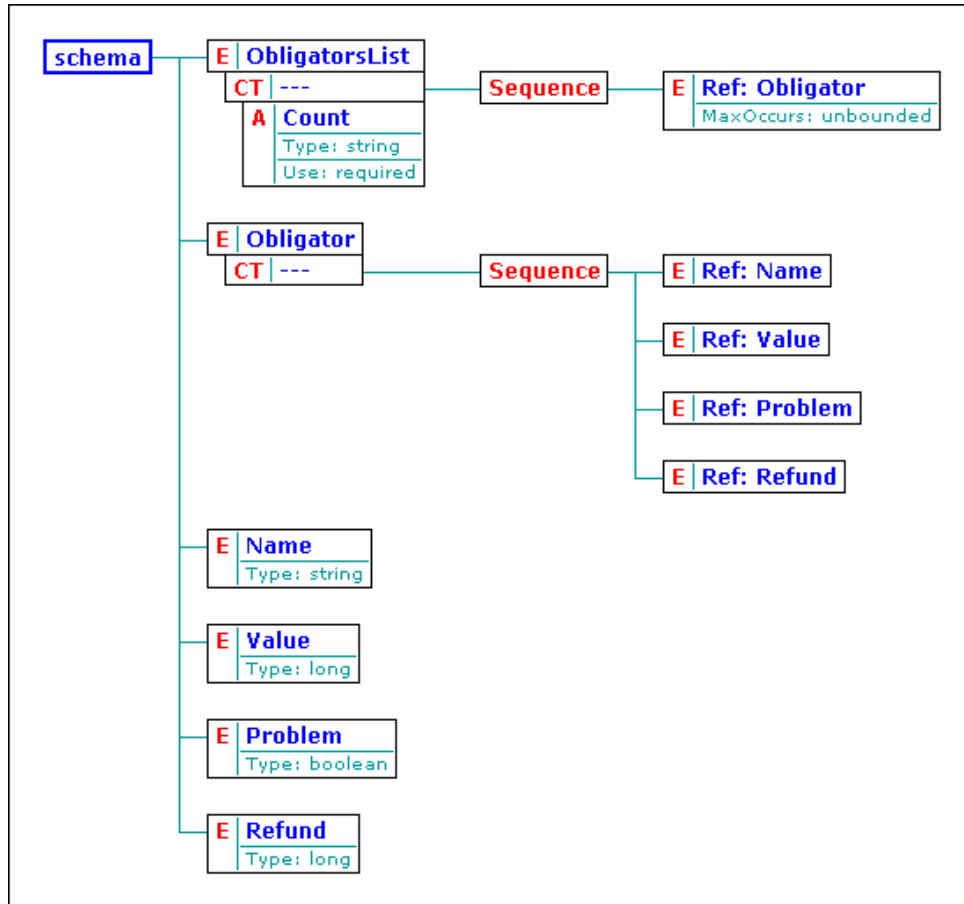
Chapter contains description of XSD Schemas from project GetObligator.

2.2.5.1. ObligatorsRegistrXSD

Section contains diagram of XMLSchema and its source file.

Oracle Service Bus - Demo project

XSD Diagram



Source

2.3. GetRefund

Chapter contains list of OSB object types available in the project GetRefund.

2.3.1. Proxy services

Chapter contains description of Proxy services from project GetRefund.

2.3.1.1. Local Proxy Services

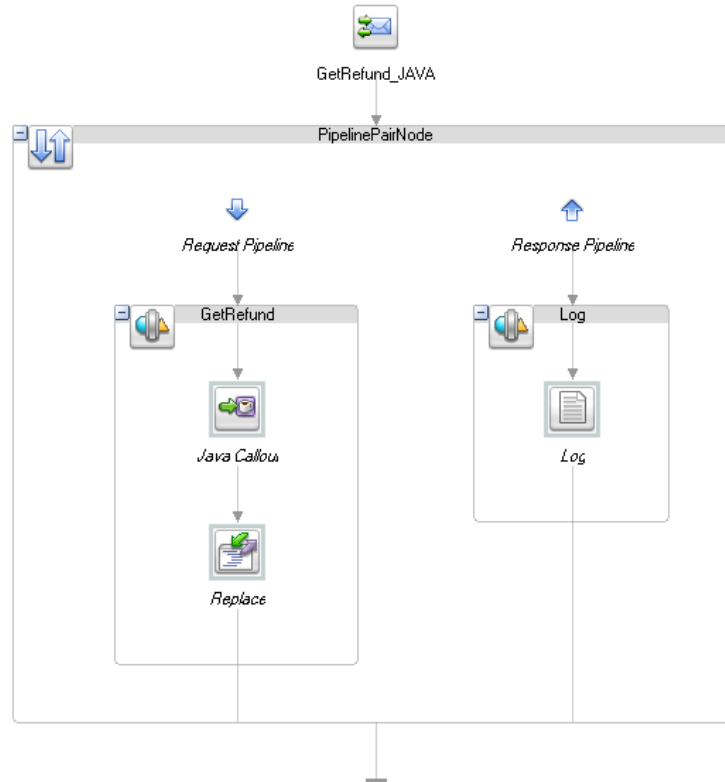
Chapter contains description of Local Proxy Services from project GetRefund.

2.3.1.1.1. GetRefund_JAVA

Section contains description of Proxy Service GetRefund/1.0/ProxyServices/GetRefund_JAVA

Oracle Service Bus - Demo project

Message Flow



General Configuration

- **Service Type:** XML Service
- **Proxy Service Provider:**

Message Type Configuration

- **Request Message Type:**
- **Response Message Type:**

Transport Configuration

- **Protocol:** local
- **Get All Headers:** Yes

Message Level Security Configuration

- **Custom Authentication:**

2.3.2. Archives

Chapter contains description of Archives from project GetRefund.

2.3.2.1. RefundProvider

Oracle Service Bus - Demo project

This object type is not supported at this time

Oracle Service Bus - Demo project

3. Cross-reference documentation

Chapter contains cross-reference documentation which shows relationships among OSB projects.

It shows relations among all documented projects. And it provides quick overview who communicates with whom.

3.1. Destinations

Chapter contains message list from cross-reference documentation.

Destination Cross-Reference represents relations among destinations and proxy and business services. It shows for one destination all projects that sends or receives data from it.

3.1.1. JMS

Chapter contains JMS destinations from all projects.

3.1.1.1. localhost:7777

Chapter contains list of JMS destinations from localhost:7777

3.1.1.1.1. cipesb.jms.etcomm.factoryxa/GetObligatoryTestQueue

This section contains list of middleware objects using URI **pipesb.jms.etcomm.factoryxa/GetObligatoryTestQueue**

3.1.1.1.1.1. References

[CalculateBonita/1.0/ProxyServices/CalculateBonita_JMS](#) on page 26 (ProxyService)
[pipesb.jms.etcomm.factoryxa/GetObligatoryTestQueue](#) (URI)

3.1.2. SOAP

Chapter contains SOAP destinations from all projects.

3.1.2.1. localhost:7777

Chapter contains list of SOAP destinations from localhost:7777

Oracle Service Bus - Demo project

3.1.2.1.1. CalculateBonita_WS

This section contains list of middleware objects using URI **CalculateBonita_WS**

3.1.2.1.1.1. References

[CalculateBonita/1.0/ProxyServices/CalculateBonita_WS](#) on page 27 (ProxyService) **CalculateBonita_WS** (URI)

3.1.2.1.2. CentralRegister/CheckRegister

This section contains list of middleware objects using URI **CentralRegister/CheckRegister**

3.1.2.1.2.1. References

[GetObligator/1.0/BussinesServices/CheckRegister](#) on page 29 (BusinessService) **CentralRegister/CheckRegister** (URI)

3.1.2.1.3. GetObligator_WS

This section contains list of middleware objects using URI **GetObligator_WS**

3.1.2.1.3.1. References

[GetObligator/1.0/ProxyServices/GetObligator_WS](#) on page 30 (ProxyService) **GetObligator_WS** (URI)

[CalculateBonita/1.0/BussinesServices/bsCalculateBonita](#) on page 25 (BusinessService) **GetObligator_WS** (URI)

Oracle Service Bus - Demo project

3.2. Projects

Chapter contains project list from cross-reference documentation.

Projects Cross-Reference represents relations among projects and destinations. It shows for one projects the destinations which this project handles.

3.2.1. CalculateBonita

Chapter contains list of all OSB objects from project CalculateBonita.

3.2.1.1. Business services

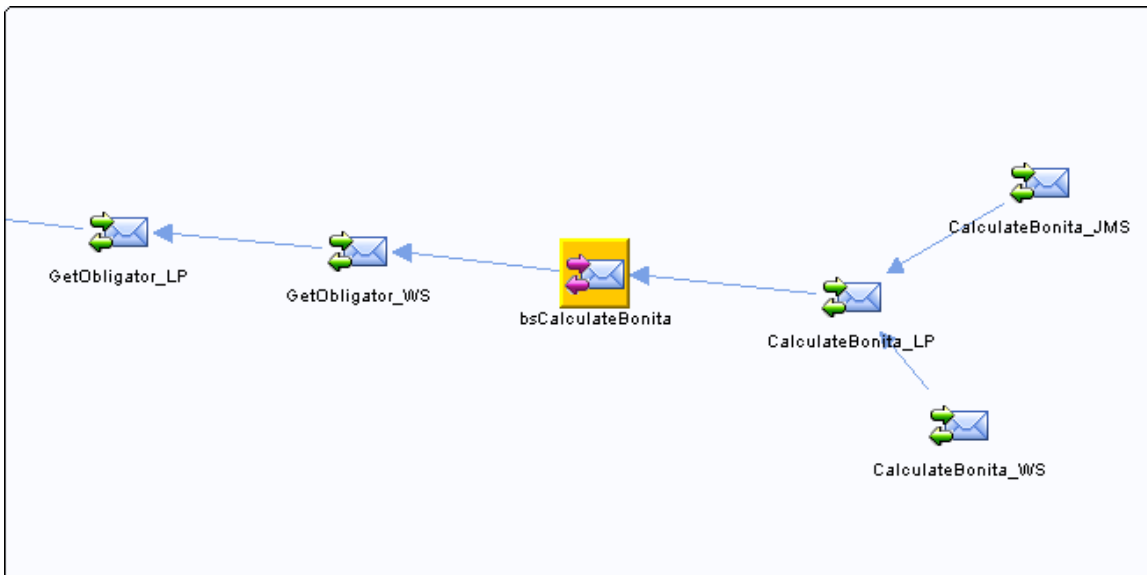
Chapter contains list of destinations handled by Business services

3.2.1.1.1. CalculateBonita/1.0/BussinesServices/bsCalculateBonita

This section contains list of middleware objects using BusinessService [bsCalculateBonita](#) on page 11

Service URI [GetObligator_WS](#) on page 24

3.2.1.1.1.1. Services



3.2.1.1.1.2. References

[CalculateBonita/1.0/BussinesServices/bsCalculateBonita](#) (BusinessService) [GetObligator_WS](#) on page 24 (URI)

Oracle Service Bus - Demo project

3.2.1.2. Proxy services

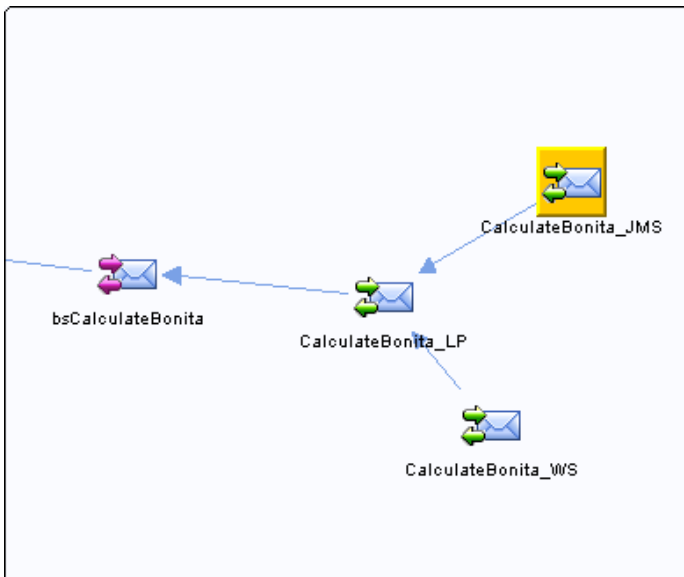
Chapter contains list of destinations handled by Proxy services

3.2.1.2.1. CalculateBonita/1.0/ProxyServices/CalculateBonita_JMS

This section contains list of middleware objects using ProxyService [CalculateBonita_JMS](#) on page 5

Service URI <cipesb.jms.etcomm.factoryxa/GetObligatoryTestQueue> on page 23

3.2.1.2.1.1. Services



3.2.1.2.1.2. References

CalculateBonita/1.0/ProxyServices/CalculateBonita_JMS (ProxyService) <cipesb.jms.etcomm.factoryxa/GetObligatoryTestQueue> on page 23 (URI)

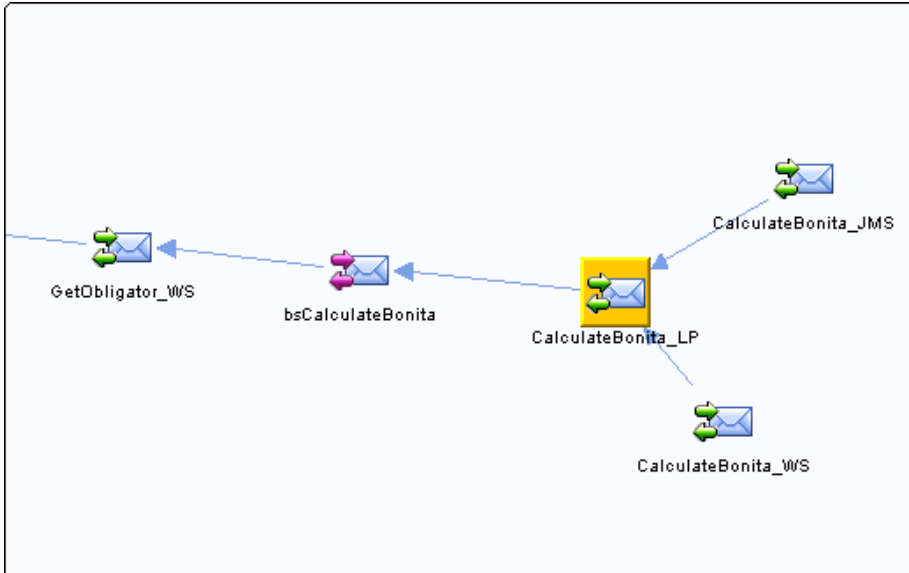
CalculateBonita/1.0/ProxyServices/CalculateBonita_JMS (ProxyService) [CalculateBonita/1.0/XSD/CalcBonitaReq](#) on page 28 (Schema)

3.2.1.2.2. CalculateBonita/1.0/ProxyServices/CalculateBonita_LP

Oracle Service Bus - Demo project

This section contains list of middleware objects using ProxyService [CalculateBonita_LP](#) on page 7

3.2.1.2.2.1. Services

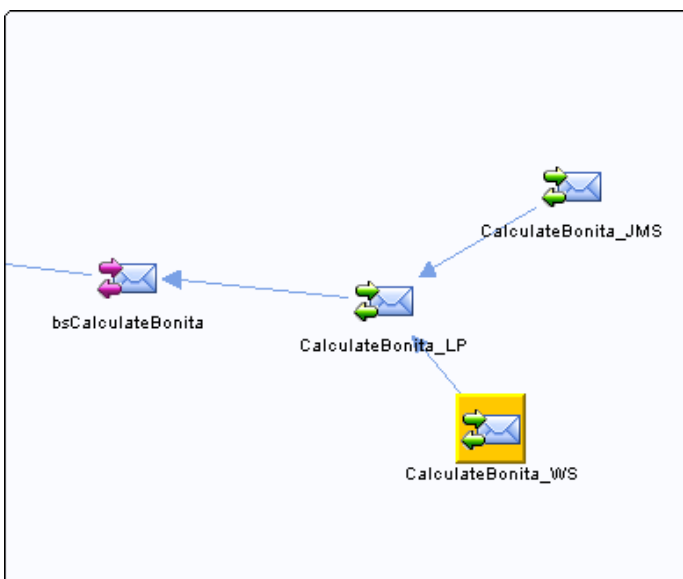


3.2.1.2.3. CalculateBonita/1.0/ProxyServices/CalculateBonita_WS

This section contains list of middleware objects using ProxyService [CalculateBonita_WS](#) on page 9

Service URI [CalculateBonita_WS](#) on page 24

3.2.1.2.3.1. Services



Oracle Service Bus - Demo project

3.2.1.2.3.2. References

CalculateBonita/1.0/ProxyServices/CalculateBonita_WS (ProxyService) [CalculateBonita_WS](#) on page 24 (URI)

CalculateBonita/1.0/ProxyServices/CalculateBonita_WS (ProxyService) [CalculateBonita/1.0/WSDL/CalculateBonita](#) on page 28 (WSDL)

3.2.1.3. WSDL

Chapter contains list of destinations handled by WSDL

3.2.1.3.1. CalculateBonita/1.0/WSDL/CalculateBonita

This section contains list of middleware objects using WSDL [CalculateBonita](#) on page 12

3.2.1.3.1.1. References

[CalculateBonita/1.0/ProxyServices/CalculateBonita_WS](#) on page 27 (ProxyService) **CalculateBonita/1.0/WSDL/CalculateBonita** (WSDL)

3.2.1.4. XQueries

Chapter contains list of destinations handled by XQueries

3.2.1.4.1. CalculateBonita/1.0/XQuery/createGetObligatoryRequest

This section contains list of middleware objects using Object [createGetObligatoryRequest](#) on page 11

3.2.1.5. XSD Schemas

Chapter contains list of destinations handled by XSD Schemas

3.2.1.5.1. CalculateBonita/1.0/XSD/CalcBonitaReq

Oracle Service Bus - Demo project

This section contains list of middleware objects using Schema [CalcBonitaReq](#) on page 12

3.2.1.5.1.1. References

[CalculateBonita/1.0/ProxyServices/CalculateBonita_JMS](#) on page 26 (ProxyService) [CalculateBonita/1.0/XSD/CalcBonitaReq](#) (Schema)

3.2.2. GetObligator

Chapter contains list of all OSB objects from project GetObligator.

3.2.2.1. Business services

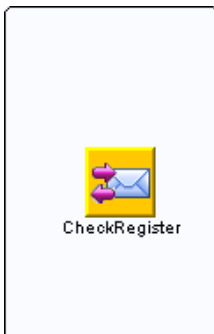
Chapter contains list of destinations handled by Business services

3.2.2.1.1. GetObligator/1.0/BussinesServices/CheckRegister

This section contains list of middleware objects using BusinessService [CheckRegister](#) on page 17

Service URI [CentralRegister/CheckRegister](#) on page 24

3.2.2.1.1.1. Services



3.2.2.1.1.2. References

[GetObligator/1.0/BussinesServices/CheckRegister](#) (BusinessService) [CentralRegister/CheckRegister](#) on page 24 (URI)

3.2.2.2. Proxy services

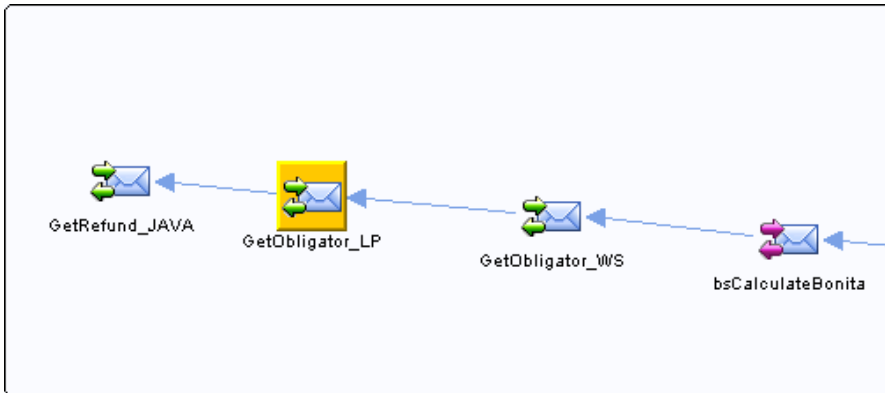
Oracle Service Bus - Demo project

Chapter contains list of destinations handled by Proxy services

3.2.2.2.1. GetObligator/1.0/ProxyServices/GetObligator_LP

This section contains list of middleware objects using ProxyService [GetObligator_LP](#) on page 13

3.2.2.2.1.1. Services

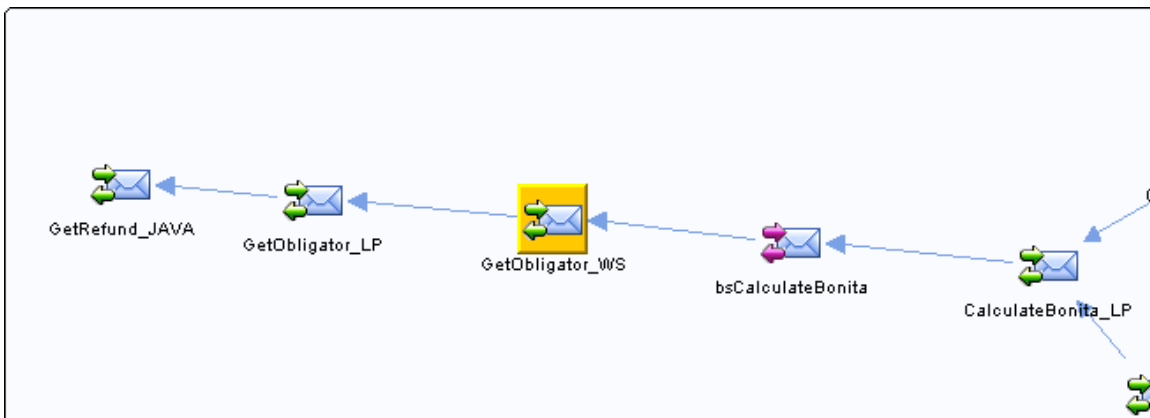


3.2.2.2.2. GetObligator/1.0/ProxyServices/GetObligator_WS

This section contains list of middleware objects using ProxyService [GetObligator_WS](#) on page 15

Service URI [GetObligator_WS](#) on page 24

3.2.2.2.2.1. Services



3.2.2.2.2.2. References

GetObligator/1.0/ProxyServices/GetObligator_WS (ProxyService) [GetObligator_WS](#) on page 24 (URI)

Oracle Service Bus - Demo project

[GetObligator/1.0/ProxyServices/GetObligator_WS](#) (ProxyService) [GetObligator/1.0/WSDL/GetObligatorServiceConcreteWSDL](#) on page 31 (WSDL)

[GetObligator/1.0/ProxyServices/GetObligator_WS](#) (ProxyService) [GetObligator/1.0/XSD/ObligatorsRegistrXSD](#) on page 32 (Schema)

3.2.2.3. WSDL

Chapter contains list of destinations handled by WSDL

3.2.2.3.1. [GetObligator/1.0/WSDL/CheckRegister](#)

This section contains list of middleware objects using WSDL [CheckRegister](#) on page 18

3.2.2.3.2. [GetObligator/1.0/WSDL/GetObligatorServiceConcreteWSDL](#)

This section contains list of middleware objects using WSDL [GetObligatorServiceConcreteWSDL](#) on page 18

3.2.2.3.2.1. *References*

[GetObligator/1.0/ProxyServices/GetObligator_WS](#) on page 30 (ProxyService) [GetObligator/1.0/WSDL/GetObligatorServiceConcreteWSDL](#) (WSDL)

3.2.2.4. XQueries

Chapter contains list of destinations handled by XQueries

3.2.2.4.1. [GetObligator/1.0/XQuery/CreateGetObligatorResponse](#)

This section contains list of middleware objects using Object [CreateGetObligatorResponse](#) on page 18

Oracle Service Bus - Demo project

3.2.2.5. XSD Schemas

Chapter contains list of destinations handled by XSD Schemas

3.2.2.5.1. GetObligator/1.0/XSD/ObligatorsRegistrXSD

This section contains list of middleware objects using Schema [ObligatorsRegistrXSD](#) on page 19

3.2.2.5.1.1. References

[GetObligator/1.0/ProxyServices/GetObligator_WS](#) on page 30 (ProxyService) [GetObligator/1.0/XSD/ObligatorsRegistrXSD](#) (Schema)

3.2.3. GetRefund

Chapter contains list of all OSB objects from project GetRefund.

3.2.3.1. Archives

Chapter contains list of destinations handled by Archives

3.2.3.1.1. GetRefund/1.0/Jars/RefundProvider

This section contains list of middleware objects using Object [RefundProvider](#) on page 21

3.2.3.2. Proxy services

Chapter contains list of destinations handled by Proxy services

3.2.3.2.1. GetRefund/1.0/ProxyServices/GetRefund_JAVA

This section contains list of middleware objects using ProxyService [GetRefund_JAVA](#) on page 20

Oracle Service Bus - Demo project

3.2.3.2.1.1. Services

