



MakeDoc

# MakeDoc for TIBCO - Installation Guide

[support@makedoc.com](mailto:support@makedoc.com)

**CUSTOMER'S ■**  
**LOGO**

## MakeDoc for TIBCO - Installation Guide

# Contents

1. Preface .....	2
2. Minimal Requirements .....	3
3. Additional Requirements .....	4
4. Installation .....	5
5. Running Application .....	15
6. Uninstallation .....	16

## MakeDoc for TIBCO - Installation Guide

### 1. Preface

MakeDoc for TIBCO generates HTML, PDF, CHM and DOCX documentation for TIBCO BusinessWorks and BusinesEvents projects. The application is written in Java and can be ported to other operating systems. Documentation can be generated from a TIBCO BW/BE project folder, TIBCO Designer EAR archives and from deployed TIBCO BW/BE projects stored in server repository. MakeDoc for TIBCO can generate documentation from related design-time libraries (.projlib files) when configured properly. The generation process is controlled by input XML file. The GUI is used to generate the input XML file.

The documentation has three main sections: **Project documentation**, **Cross-reference documentation** and **Repository Analyst** output. The **Project documentation** section contains an overview of all projects in solution. TIBCO resources from each project are documented in the form similar to TIBCO Designer. The **Cross-reference documentation** section is focused on communication among all documented projects through various destinations - **Destinations** part. It also summarizes usage of global variables by all documented projects in **Global Variables** part. The **Database Objects** part shows queries executed by projects on database tables, views or procedures. **Repository Analyst** is module extending MakeDoc documentation basic functionality, which analyses the changes at different documentation snapshots. It provides valuable information about modifications, changes and development progress at documented projects. Repository Analyst output is available in HTML and PDF format.

MakeDoc also provides **Quality Assurance** feature. This tool is able to check whether defined rules were followed in chosen projects and shows all occurrences of violations of these rules. Quality Assurance output is generated with Project and Cross-reference part of documentation or as a standalone HTML document, which can be also opened from MakeDoc main window.

This document specifies the system requirements and the MakeDoc for TIBCO installation process.

Potential problems and their solutions are described in the *User's Guide* document, which can be found at [www.makedoc.com](http://www.makedoc.com).

## MakeDoc for TIBCO - Installation Guide

### 2. Minimal Requirements

- **Java(TM) 2 Runtime Environment 1.6 or higher (J2SE)**

Although TIBCO products currently require version 1.5, MakeDoc uses functionality provided by version 1.6.

The latest version is available at <http://java.sun.com>

- **TIBCO BusinessWorks 5.1 or higher**

Only projects created in version 5.1 or higher are supported.

- **1GB RAM**

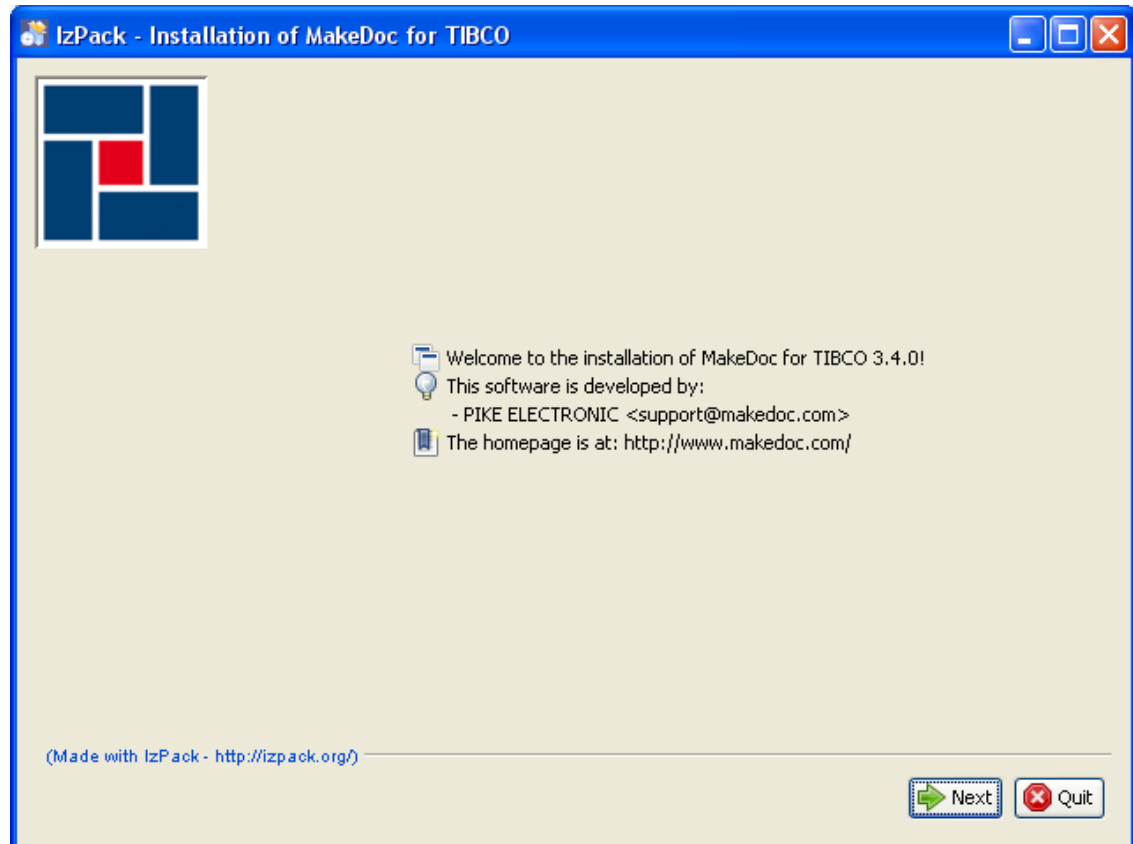
## MakeDoc for TIBCO - Installation Guide

### 3. Additional Requirements

- **TIBCO BusinessEvents 1.3 or higher** must be installed on your machine to document projects using BusinessEvents items.
- **TIBCO Runtime Agent 5.3 or higher** must be on your machine to document projects stored in a remote server repository.
- **Microsoft HTML Help Workshop** must be on your machine to generate Microsoft Compiled HTML Help documents (.CHM file). Microsoft Compiled HTML Help can be downloaded from <http://www.microsoft.com/downloads> . HTMLHELP.EXE is the only file that must be downloaded.

## MakeDoc for TIBCO - Installation Guide

### 4. Installation



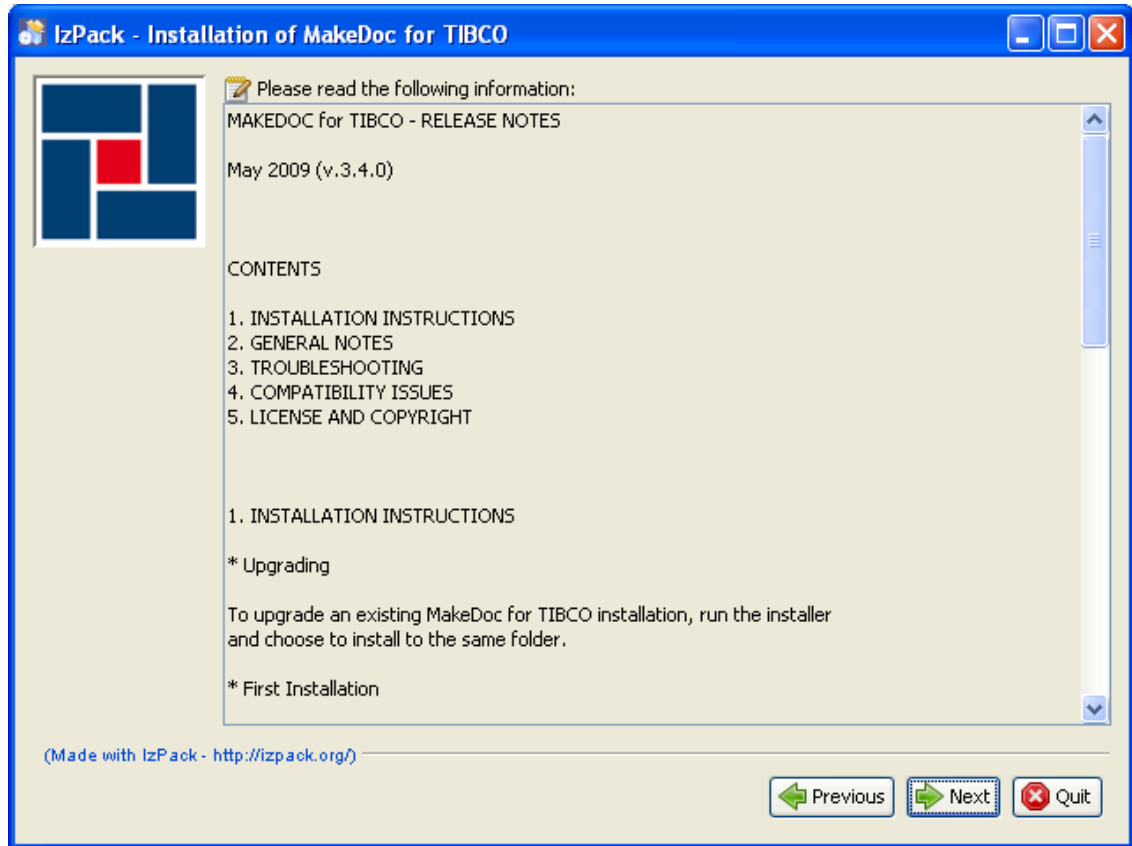
**Figure1.** Installation wizard

Unzip the distribution into a temporary folder.

Run setup.exe file.

Click the **Next** button to run the installation.

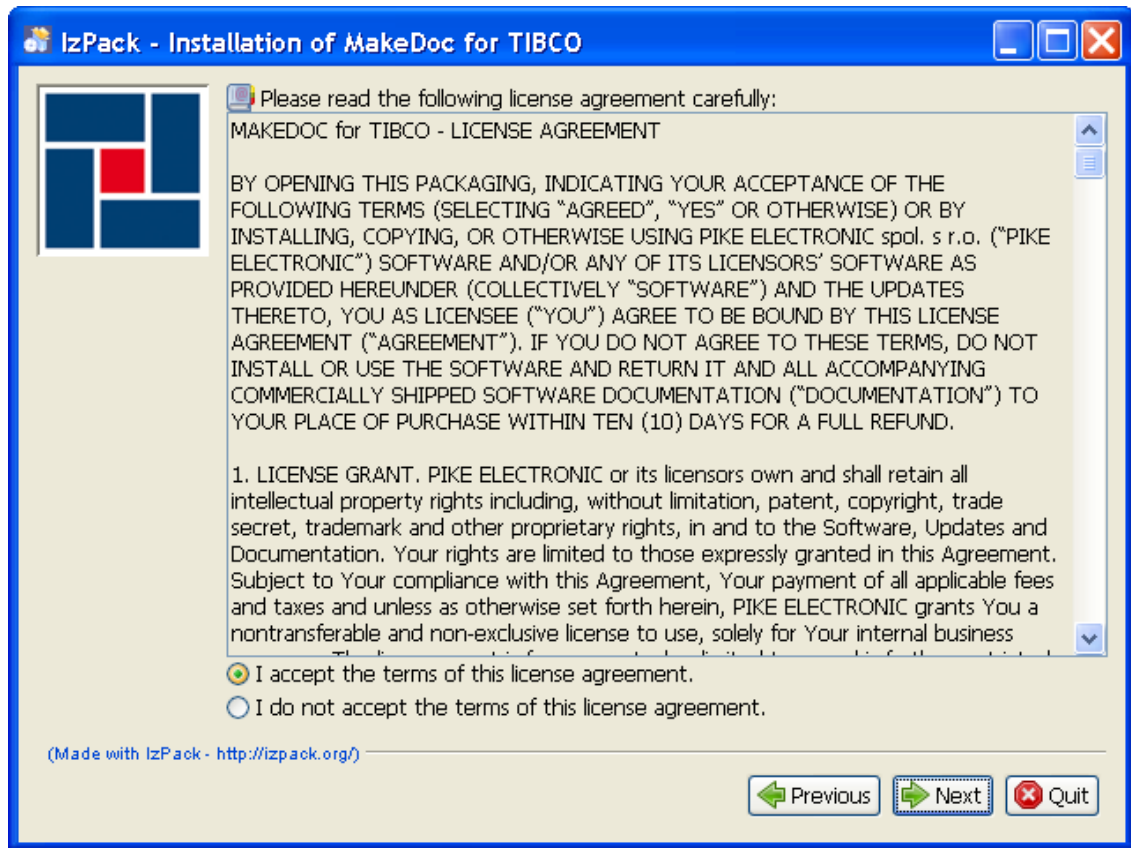
## MakeDoc for TIBCO - Installation Guide



**Figure2.** Release notes in MakeDoc for TIBCO installation wizard

Read the RELEASE NOTES in this step of the installation and then click the **Next** button.

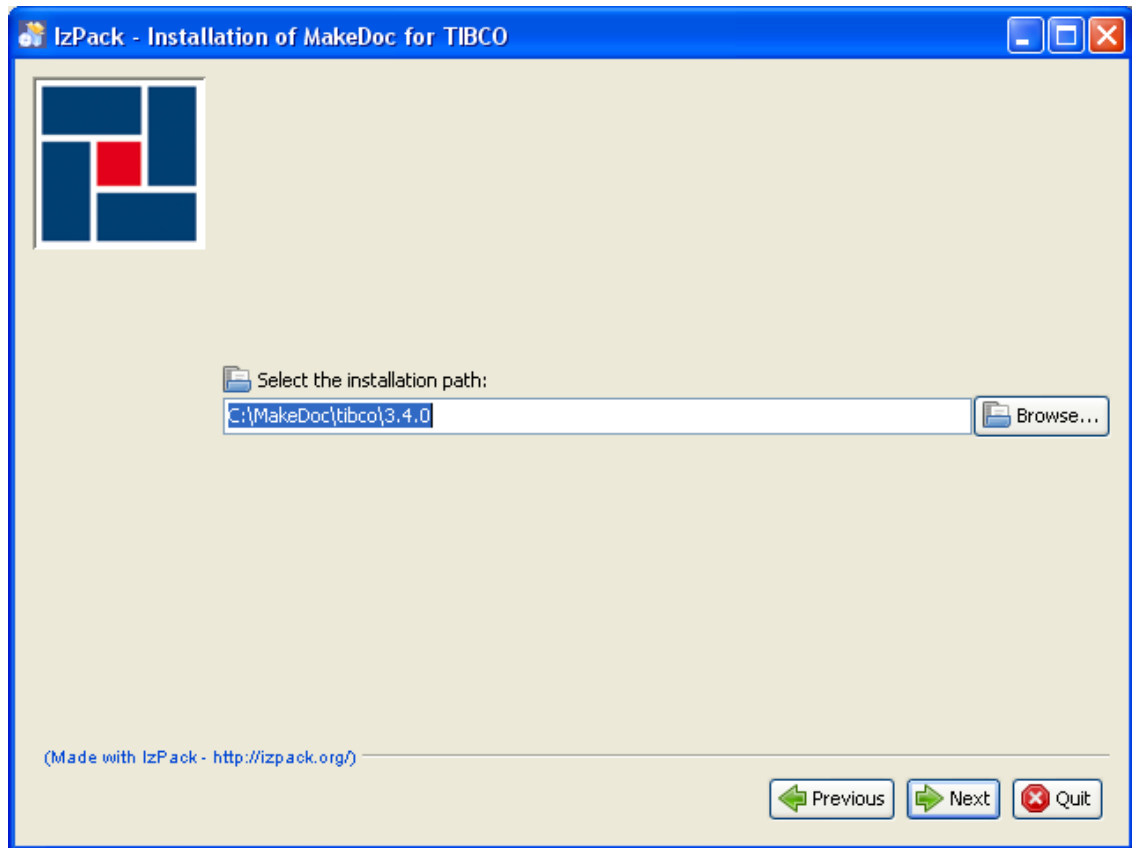
## MakeDoc for TIBCO - Installation Guide



**Figure3.** License agreement in MakeDoc for TIBCO installation wizard

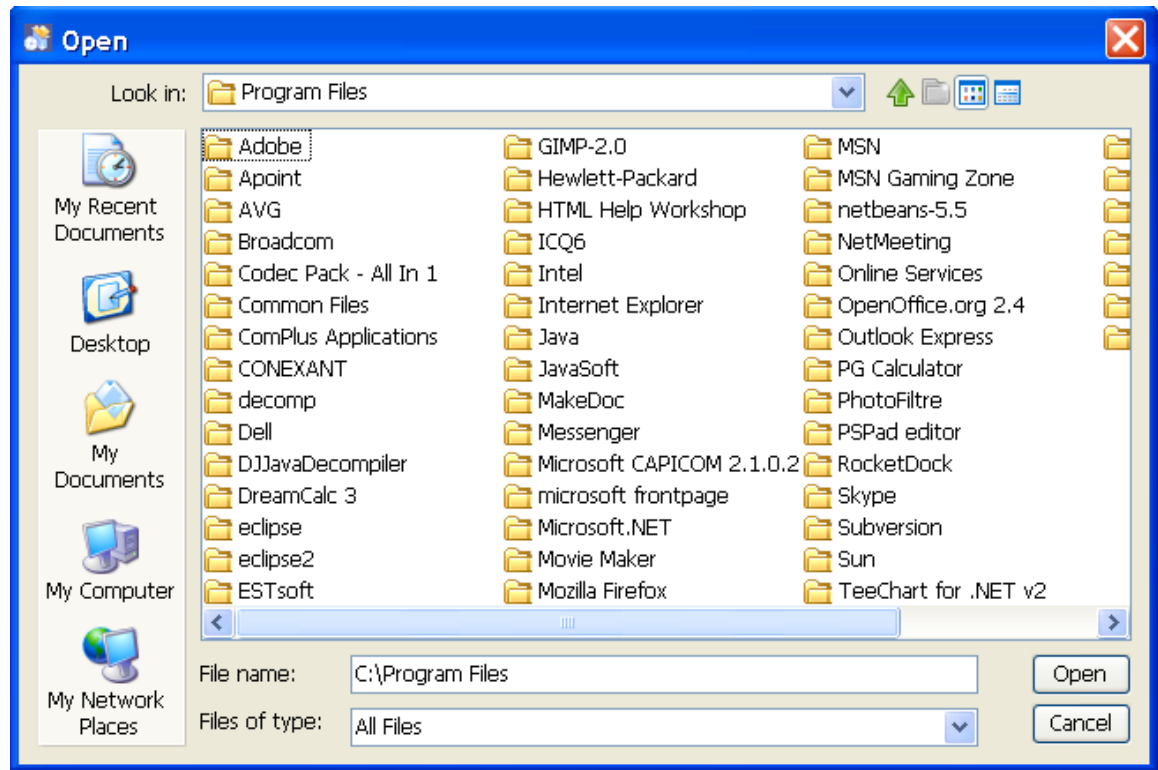
Read the MAKEDOC for TIBCO - LICENSE AGREEMENT carefully. If you accept its terms, select **I accept the terms of this license agreement** and click the **Next** button.

## MakeDoc for TIBCO - Installation Guide



**Figure4.** Selecting the installation path in MakeDoc for TIBCO installation wizard

## MakeDoc for TIBCO - Installation Guide



**Figure5.** Open file dialog

Select the installa-

- Accept the default or
- Click the **Browse...** button. Browse for the desired installation path and the click **Open** button.

Click the **Next** button.

## MakeDoc for TIBCO - Installation Guide



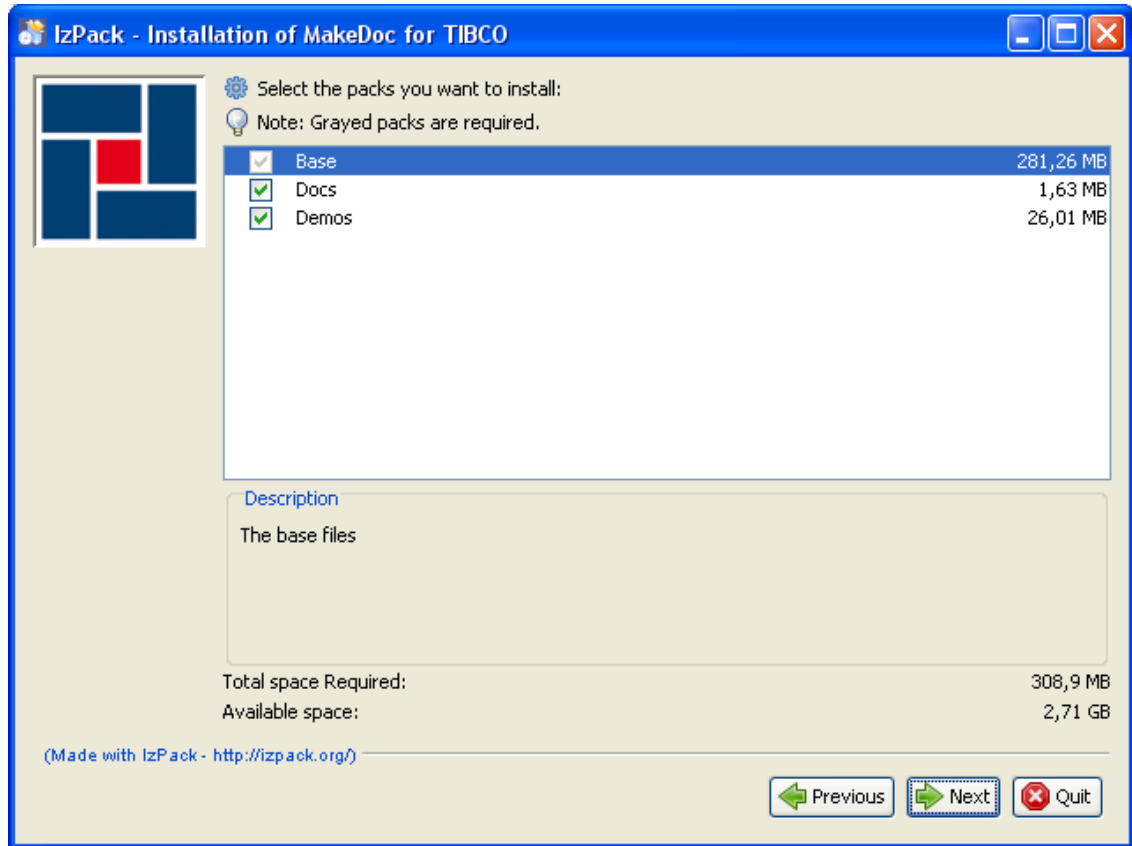
**Figure6.** Locating installed TIBCO products in MakeDoc for TIBCO installation wizard

Set the local TIBCO product installation directories:

- TIBCO Business Works  
Required for installation.
- TIBCO Business Events  
Optional, needed if generating documentation of projects with BusinessEvents items.
- TIBCO Runtime Agent  
Optional, needed if generating documentation of projects stored in remote server repository.

Click **Browse...** and select path where the product is installed if the default is not supplied or is not correct.

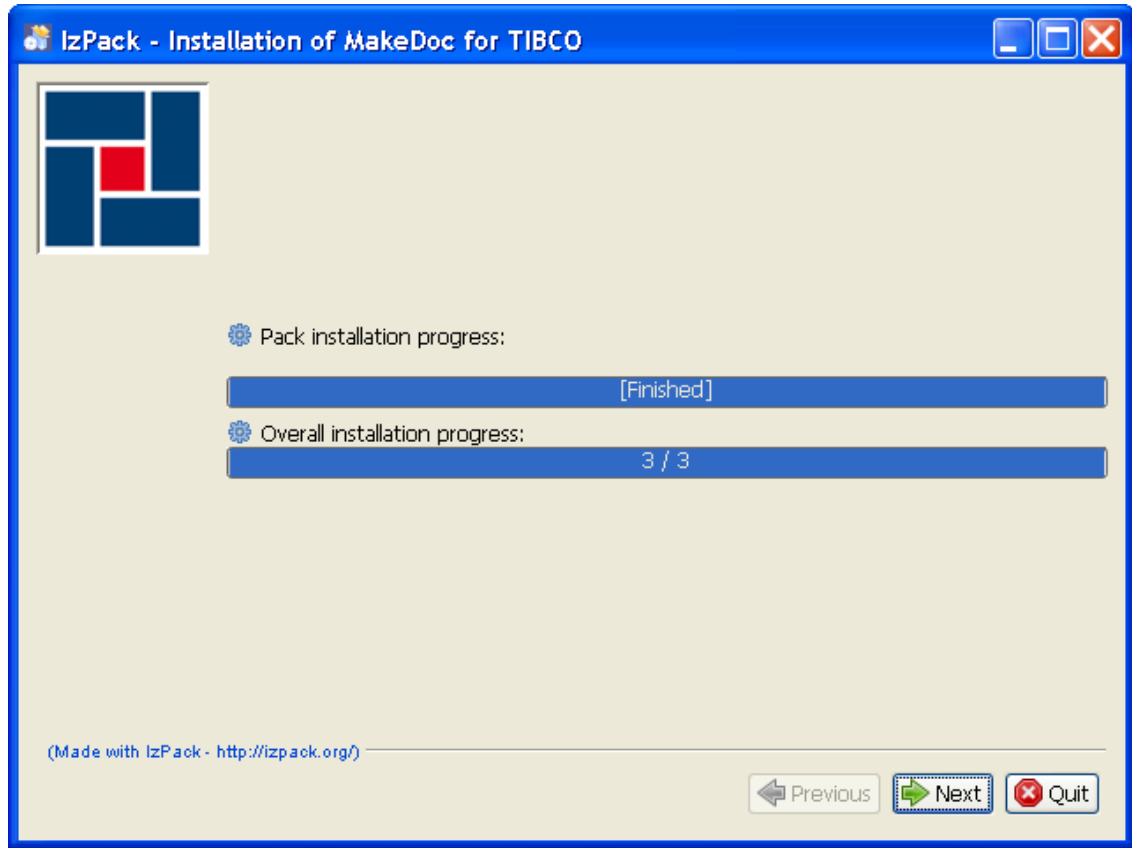
## MakeDoc for TIBCO - Installation Guide



**Figure7.** Selecting packs to install in MakeDoc for TIBCO installation wizard

Select the packs to install and start the installation by clicking the **Next** button.

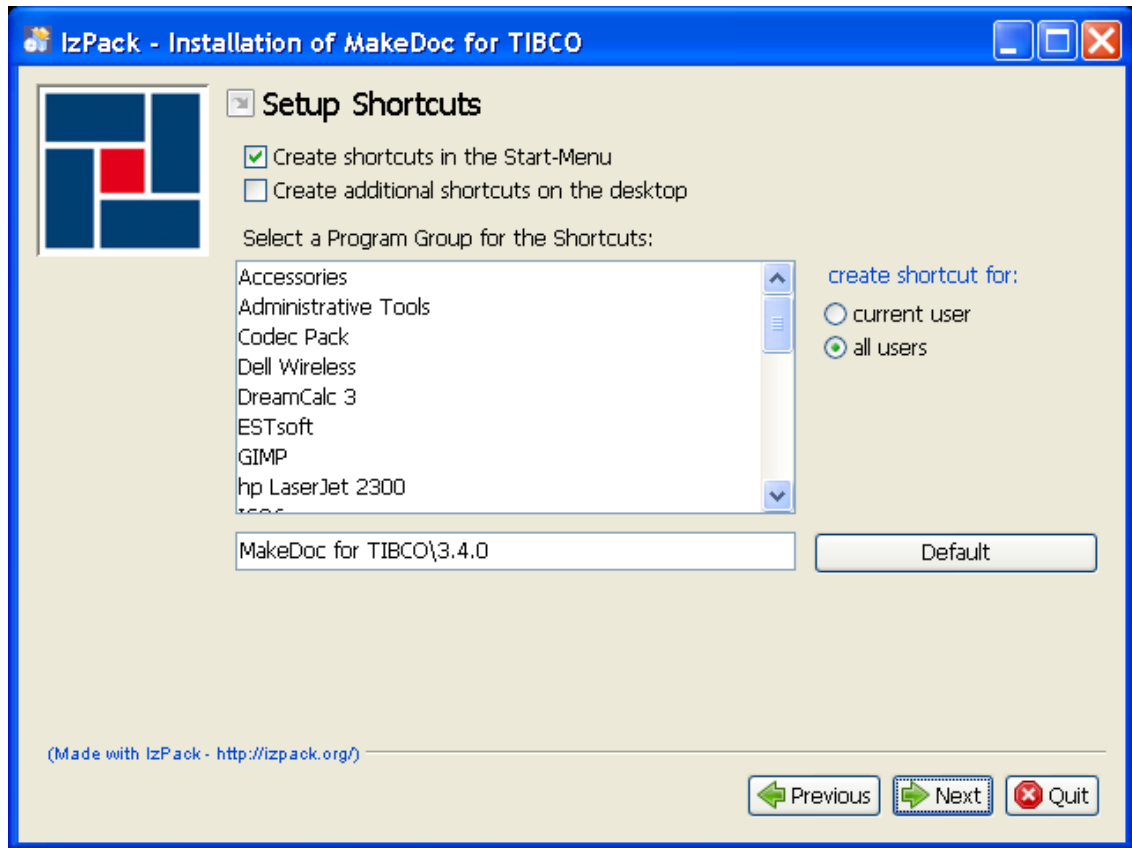
## MakeDoc for TIBCO - Installation Guide



**Figure8. Installation finished**

Wait for the installation to finish. Click the **Next** button.

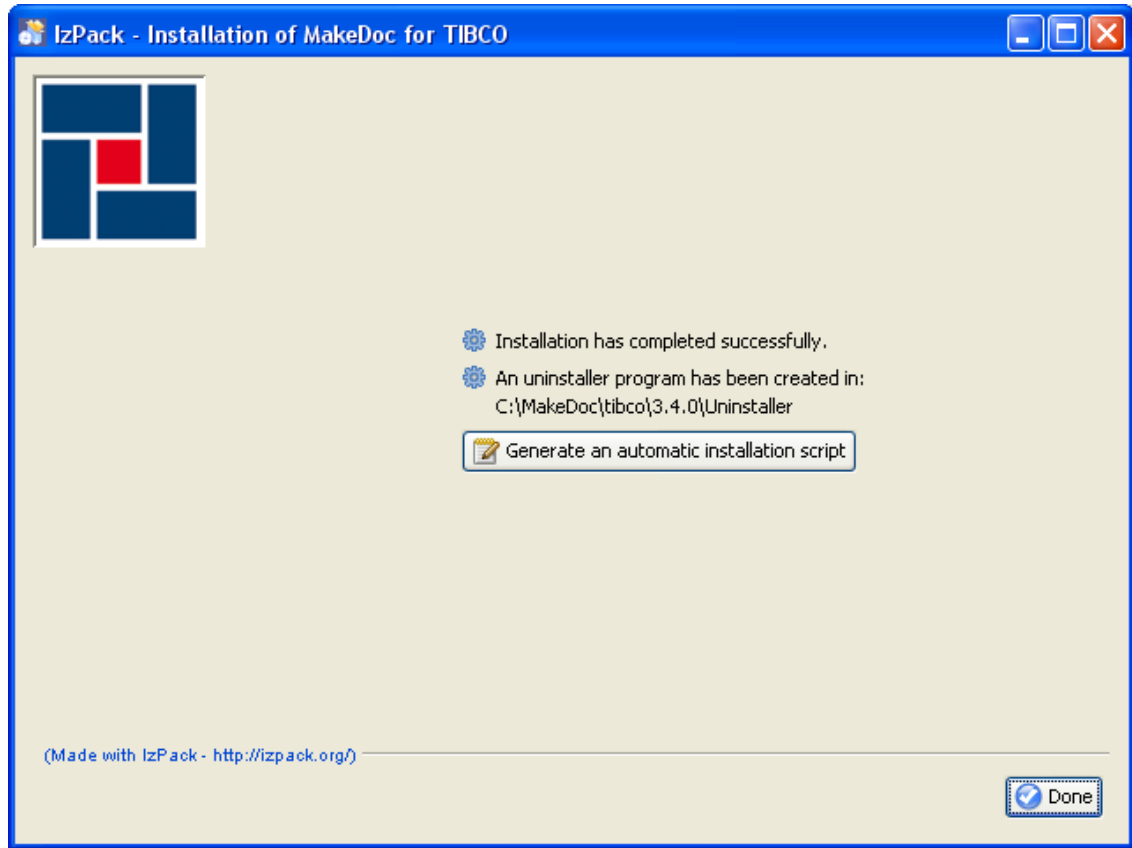
## MakeDoc for TIBCO - Installation Guide



**Figure9.** Setup shortcuts in MakeDoc for TIBCO installation wizard

Set the shortcuts to be created, for which users and in which program group. Click the **Next** button.

## MakeDoc for TIBCO - Installation Guide



**Figure10. Installation completed**

The installation is complete. Click the **Done** button.

## MakeDoc for TIBCO - Installation Guide

### 5. Running Application

Save generated trial license key file into "MakeDoc for TIBCO" home directory after the installation.  
Standard home directory is:

*C:\MakeDoc\tibco\3.4.0.*

On Windows execute "MakeDoc.exe" , or use shortcut in "MakeDoc for TIBCO" program group (if created by the installation process).

e. g.: *Start --> All Programs --> MakeDoc for TIBCO --> 3.4.0 --> MakeDoc for TIBCO 3.4.0*

## MakeDoc for TIBCO - Installation Guide

### 6. Uninstallation

MakeDoc for TIBCO can be uninstalled in two ways:

1. Using uninstallation shortcut in "MakeDoc for TIBCO" program group (if created by the installation process).  
e. g.: *Start --> All Programs --> MakeDoc for TIBCO --> 3.4.0 --> Uninstall MakeDoc for TIBCO 3.-4.0*
2. Simply by deleting the "MakeDoc for TIBCO" directory created by the installation.

No additional files are created by the "MakeDoc for TIBCO" installation.